

DHI-ARD910-W

Wireless Flood Detector



Features

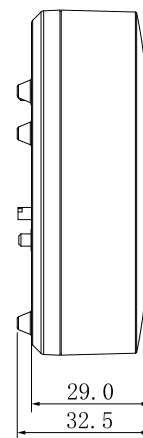
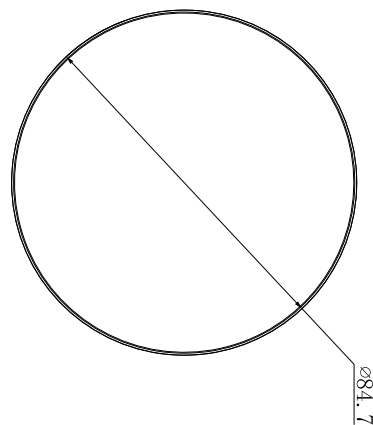
- Contact flood detection technology, quickly detect occurrence of flood or water leakage
- Adjustable probe design, with different sensitivity of detection
- High performance RF communication module, with strong stability of communication
- IP66 waterproof
- Super low power consumption, duration up to 24 months
- Installation available in all-in-one and split suitable for different installation environments.
- Help protect your home from potential water damage. Use near sump pumps, plumbing, refrigerators, laundry rooms, dishwashers, washing machines, sinks, water heaters, toilets, garages, and basements.



Technical Specification

| | |
|-------------------------------|---------------------------------|
| Name | Wireless Flood Detector |
| Detection Method | Contact flood detection |
| Water Level Monitoring Range | 0.4mm~3.2mm |
| Alarm | LED flashes and built-in buzzer |
| Carrier Frequency | 433/868MHz |
| Transmitting Power | 10dBm |
| Transmission Distance | 150 meters(open area) |
| Waterproof Level | IP66 |
| Battery Life | 2 years |
| Work Temperature and Humidity | -10 C~55 C, <95% |
| Installation | Ground or wall mount |
| Dimensions | 85×85 × 29mm (L×W×T) |
| Weight | 0.25kg |

Dimensions



units: mm