

AX Hybrid Quick Start Guide

ENGLISH

Diagram References

1 Appearance

Indicators	Components
① AC Power	⑥ Lock Nut
② Status	⑦ Power Interface
③ Link	⑧ Wiring Terminal
④ Arm/Disarm	⑨ Network Interface
⑤ Alarm	⑩ Reset Button
⑥ Power On	⑪ Battery Connector
⑦ Power Off	⑫ TAMPER Switch
⑧ System Fault	⑬ AP&STA
⑨ Panel is added to Hik-connect account	⑭ Switch
⑩ Panel is not added to Hik-connect account	
⑪ Alarm Occurred	
⑫ No Alarm	
⑬ Device Tampered	
⑭ No Device Tampered	

Note: Remove the rear cover, and some of the components and interfaces are on the rear panel.

2 Wiring and Installation

- 1-2. Install the control panel.
3. Fix the SIM card module (sold separately) and connect the antenna.
4. Fix the telephone module (sold separately).
5. Wire the cables.

Note: Power down the control panel before wiring accessories and peripherals.

- 1 Telephone Module Wiring
- 2 Peripherals Wiring
 1. Alarm Input Wiring
 - a. NC Detector
 - b. NO Detector
 - c. Unoccupied Zone
 - d. Tamper-proof
 - e. Dual-Zone Series Connection
 - f. Dual-Zone Parallel Connection
 2. Alarm Output Wiring
 3. RS-485 Wiring: Wireless Receiver, keypad, etc.
- 3 Network Wiring
- 4 Power Supply Wiring
- 5 Close the case of the control panel.
- 6 TAMPER Screw
It is compulsory to secure the TAMPER screw.

3 Set Up

For more activation methods, refer to the User Manual.

Set up via Web Client

- Default IP Address:
Mobile browser(AP mode):192.168.8.1
Network cable connection:192.0.0.64
1. Enter the device IP address in the web browser.
 2. Create a password for admin account to activate the device.

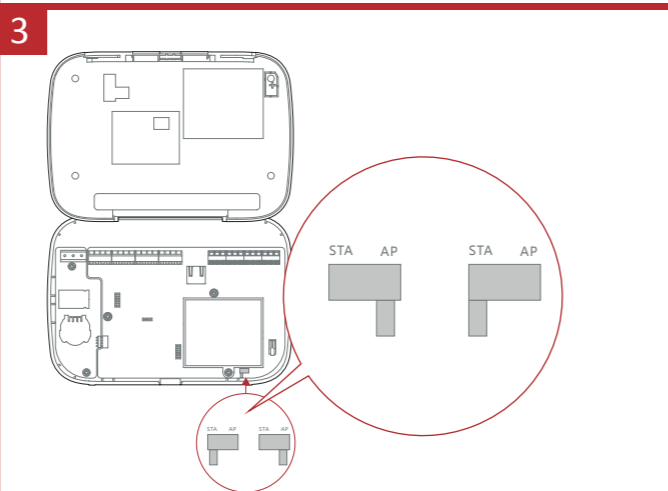
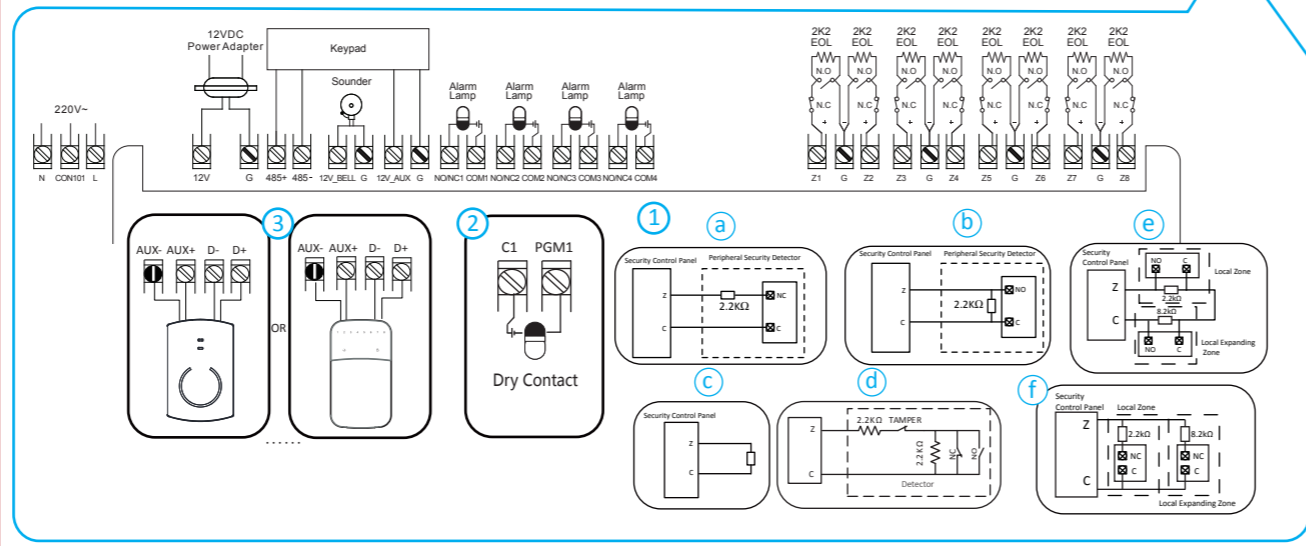
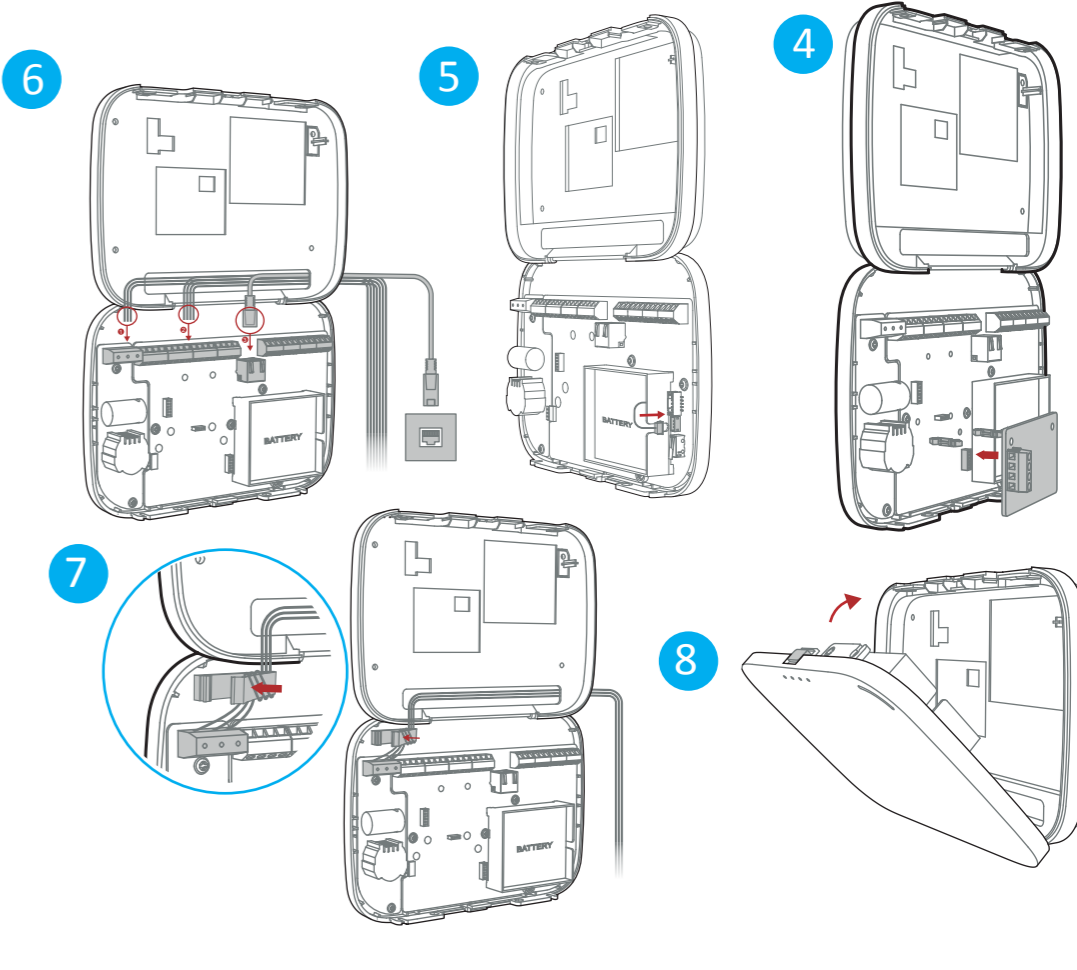
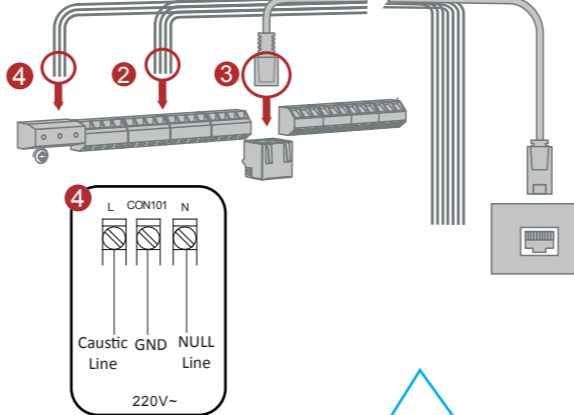
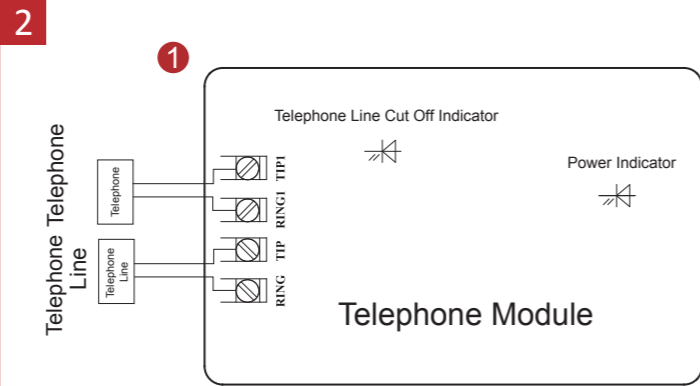
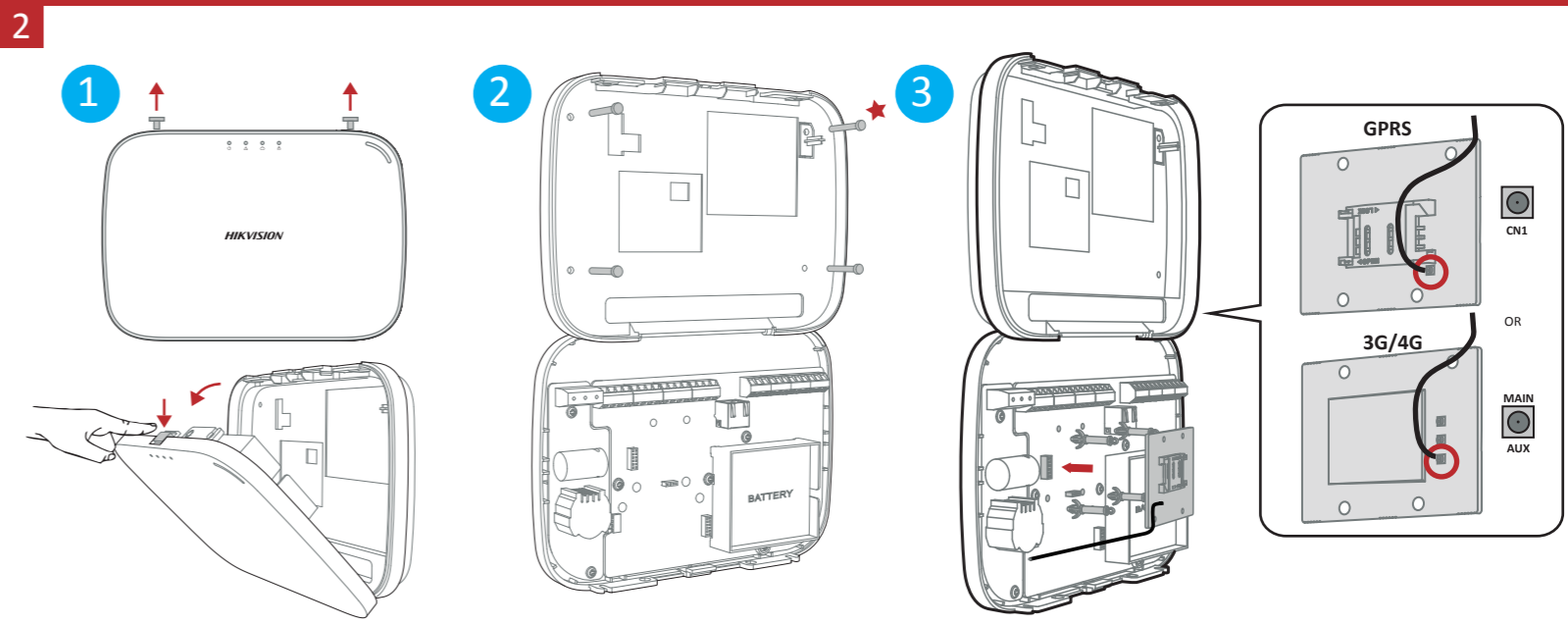
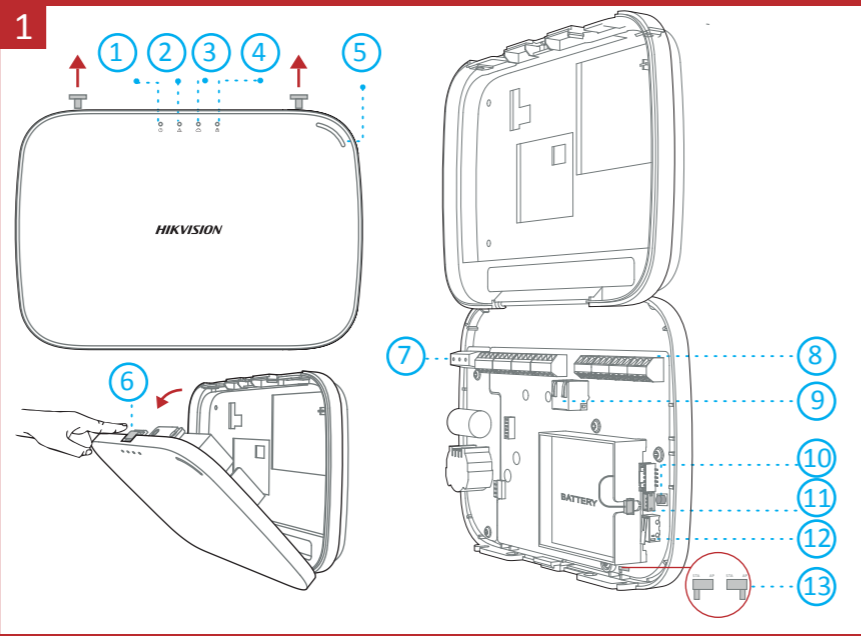
Reset:
After the device is started, hold the reset button for 10 seconds to reset the device.

Specification

Model	DS-PHA20-P DS-PHA64-P	DS-PHA20-W2P DS-PHA64-W4P
Device connection	Detector	UP to 16/56 (4/8 on-board, 16/56 wired/wireless)
	Relay output	Up to 64 (2/4 on-board, 18/60 wired/wireless)
	RS-485 wireless receiver	Up to 7
	Sounder	1 wired sounders (on-board connection)
Alarm input	Area	4 (DS-PHA20); 8 (DS-PHA64)
	Keyfob	8
Function	Notification	SMS&Phone call (with 3G/4G/GPRS module)
	Network camera	N/A 2 (DS-PHA20) 4 (DS-PHA64)
Protocol	Protocol	ISAPI, DC09, ISUP, CSV-IP, EZVIZ
	Wired network	10M/100M Ethernet
Network	Cellular network	Support(with 3G/4G/GPRS module)
	Wi-Fi/AP	Standard N/A 802.11b/g/n
User	User	Installer: 1; Administrator: 1; Maintenance:1 Operator: 13 (DS-PHA20), 45 (DS-PHA64)
	Tag/Card	12
Others	Operation temperature	-10 °C to 55 °C (-4 °F to 122 °F)
	Operation humidity	10% to 90% (No condensing)
	Dimension (W × H × D)	Plastic Case: 220 mm (8.6") × 152 mm (6.0") × 31.5 mm (1.2")
Weight	0.8 kg	0.8 kg

Note: The 868 Mhz wireless sounder can be enrolled to the hybrid control panel via the wireless receiver that is at the address of 9.

Mains supply cables need to meet IEC 60332 or UL certification.
AUX+ output interface: DC12 V, 1000 mA.
BELL+ output interface: DC12 V, 200 mA.
flame class of shell 5VB.



User Manual



Product Information

©2021 Hangzhou Hikvision Digital Technology Co., Ltd. All rights reserved.
About this Manual
The Manual includes instructions for using and managing the Product. Pictures, charts, images and all other information hereinafter are for description and explanation only. The information contained in the Manual is subject to change without notice, due to firmware updates or other reasons. Please find the latest version of this Manual at the Hikvision website (https://www.hikvision.com/).
Please use this Manual with the guidance and assistance of professionals trained in supporting the Product.
Trademarks
HIKVISION/DIV and other Hikvision's trademarks and logos are the properties of Hikvision in various jurisdictions. Other trademarks and logos mentioned are the properties of their respective owners.
DISCLAIMER
TO THE MAXIMUM EXTENT PERMITTED BY APPLICABLE LAW, THIS MANUAL AND THE PRODUCT DESCRIBED, WITH ITS HARDWARE, SOFTWARE AND FIRMWARE, ARE PROVIDED "AS IS" AND "WITH ALL FAULTS AND ERRORS". HIKVISION MAKES NO WARRANTIES, EXPRESS OR IMPLIED, INCLUDING WITHOUT LIMITATION, MERCHANTABILITY, SATISFACTORY QUALITY, OR FITNESS FOR A PARTICULAR PURPOSE. THE USE OF THE PRODUCT BY YOU IS AT YOUR OWN RISK. IN NO EVENT WILL HIKVISION BE LIABLE TO YOU FOR ANY SPECIAL, CONSEQUENTIAL, INCIDENTAL, OR INDIRECT DAMAGES, INCLUDING, AMONG OTHERS, DAMAGES FOR LOSS OF BUSINESS PROFITS, BUSINESS INTERRUPTION, OR LOSS OF DATA, CORRUPTION OF SYSTEMS, OR LOSS OF DOCUMENTATION, WHETHER BASED ON BREACH OF CONTRACT, TORT (INCLUDING NEGLIGENCE), PRODUCT LIABILITY OR OTHERWISE, IN CONNECTION WITH THE USE OF THE PRODUCT, EVEN IF HIKVISION HAS BEEN ADVISED OF THE POSSIBILITY OF SUCH DAMAGES OR LOSS.
YOU AGREE TO USE THIS PRODUCT IN COMPLIANCE WITH ALL APPLICABLE LAWS, AND YOU ARE SOLELY RESPONSIBLE FOR ENSURING THAT YOUR USE CONFORMS TO THE APPLICABLE LAW, ESPECIALLY YOU ARE RESPONSIBLE FOR USING THIS PRODUCT IN A MANNER THAT DOES NOT INFRINGE ON THE RIGHTS OF THIRD PARTIES, INCLUDING WITHOUT LIMITATION, RIGHTS OF PUBLICITY, INTELLECTUAL PROPERTY RIGHTS, OR DATA PROTECTION AND OTHER PRIVACY RIGHTS. YOU SHALL NOT USE THIS PRODUCT FOR ANY PROHIBITED END-USES, INCLUDING THE DEVELOPMENT OR PRODUCTION OF WEAPONS OF MASS DESTRUCTION, THE DEVELOPMENT OR PRODUCTION OF CHEMICAL OR BIOLOGICAL WEAPONS, ANY ACTIVITIES IN THE CONTEXT RELATED TO ANY NUCLEAR EXPLOSIVE OR UNSAFE NUCLEAR FUEL-CYCLE, OR IN SUPPORT OF HUMAN RIGHTS ABUSES. IN THE EVENT OF ANY CONFLICTS BETWEEN THIS MANUAL AND THE APPLICABLE LAW, THE LATER PREVAILS.
CAUTION: SUITABLE FOR MOUNTING ON CONCRETE OR OTHER NON-COMBUSTIBLE SURFACE ONLY. CABLES CAN ONLY BE ROUTED THROUGH THE REAR PANEL. DO NOT ROUTE THE ANTENNA WIRE THROUGH THE ELECTRICAL BOARD. COVER OR COPPER WIRE CANNOT BE EXPOSED AT THE ELECTRICAL TERMINAL. A TWO-POLE DISCONNECTED DEVICE (BREAKER) SHALL BE PROVIDED WHEN INSTALLED. RISK OF EXPLOSION IF BATTERY IS REPLACED BY AN INCORRECT TYPE DISPOSE OF USED BATTERIES ACCORDING TO THE INSTRUCTIONS.



FCC Information
Please take attention that changes or modification not expressly approved by the party responsible for compliance could void the user's authority to operate the equipment.
FCC compliance: This equipment has been tested and found to comply with the limits for a Class B digital device, pursuant to part 15 of the FCC Rules. These limits are designed to provide reasonable protection against harmful interference in a residential installation. This equipment generates, uses and can radiate radio frequency energy and, if not installed and used in accordance with the instructions, may cause harmful interference to radio communications. However, there is no guarantee that interference will not occur in a particular installation. If this equipment does cause harmful interference to radio or television reception, which can be determined by turning the equipment off and on, the user is encouraged to try to correct the interference by one or more of the following measures:
— Reorient or relocate the receiving antenna.
— Increase the separation between the equipment and receiver.
— Connect the equipment into an outlet on a circuit different from that to which the receiver is connected.
— Consult the dealer or an experienced radio/TV technician for help.
This equipment should be installed and operated with a minimum distance 20cm between the radiator and your body.
FCC Conditions
This device complies with part 15 of the FCC Rules. Operation is subject to the following two conditions:
1. This device may not cause harmful interference.
2. This device must accept any interference received, including interference that may cause undesired operation.
2012/19/EU (WEEE directive): Products marked with this symbol cannot be disposed of as unsorted municipal waste in the European Union. For proper recycling, return this product to your local supplier upon the purchase of equivalent new equipment, or dispose of it at designated collection points. For more information see: www.recyclethis.info
2006/66/EC (battery directive): This product contains a battery that cannot be disposed of as unsorted municipal waste in the European Union. See the product documentation for specific battery information. The battery is marked with this symbol, which may include lettering to indicate cadmium (Cd), lead (Pb), or mercury (Hg). For proper recycling, return the battery to your supplier or to a designated collection point. For more information see www.recyclethis.info
This product and - if applicable - the supplied accessories too are marked with "CE" and comply therefore with the applicable harmonized European standards listed under the RE Directive 2014/53/EU, the EMC Directive 2014/30/EU, the LVD Directive 2014/35/EU, the RoHS Directive 2011/65/EU

