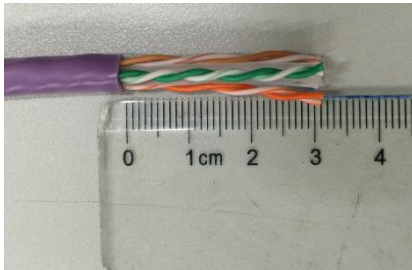
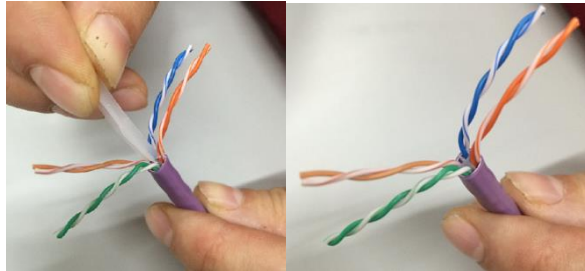


Instruction for Cat 6 UTP EUROLAN Q-PLUG: 13A-U6-11WT

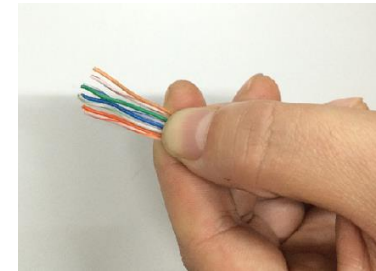
1. Remove Cable' Jacket



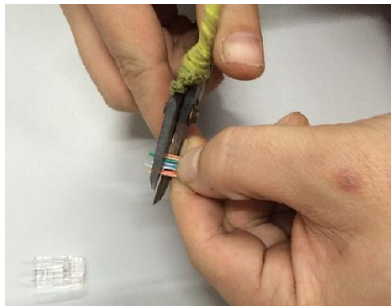
2. Cut the Cross



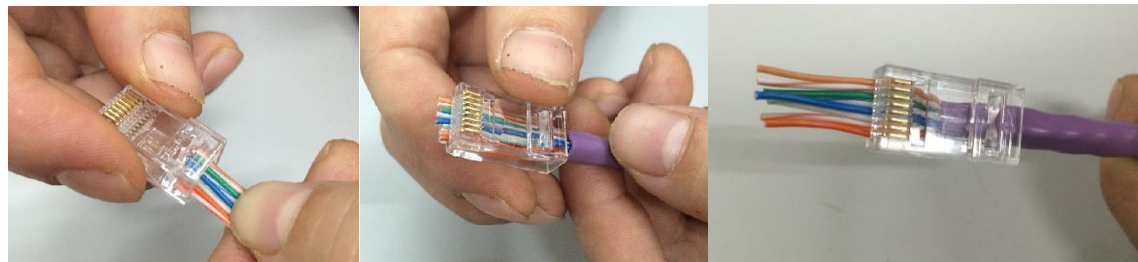
3. Arrange the 4PR Wires



4. After arrangement, cut 2mm away



5. Assemble Plug by wiremap 568A or 568B



6. Cut the Balance Wires and Crimping Plug by the Squeezing the Crimping Tool



7. Completion.

